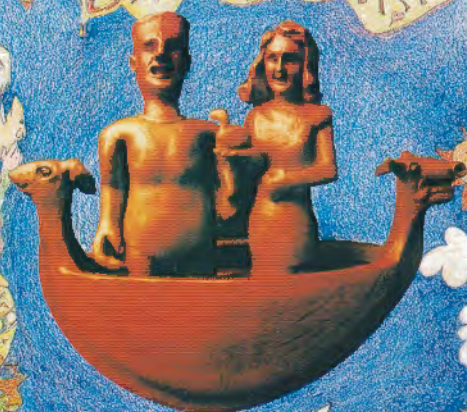
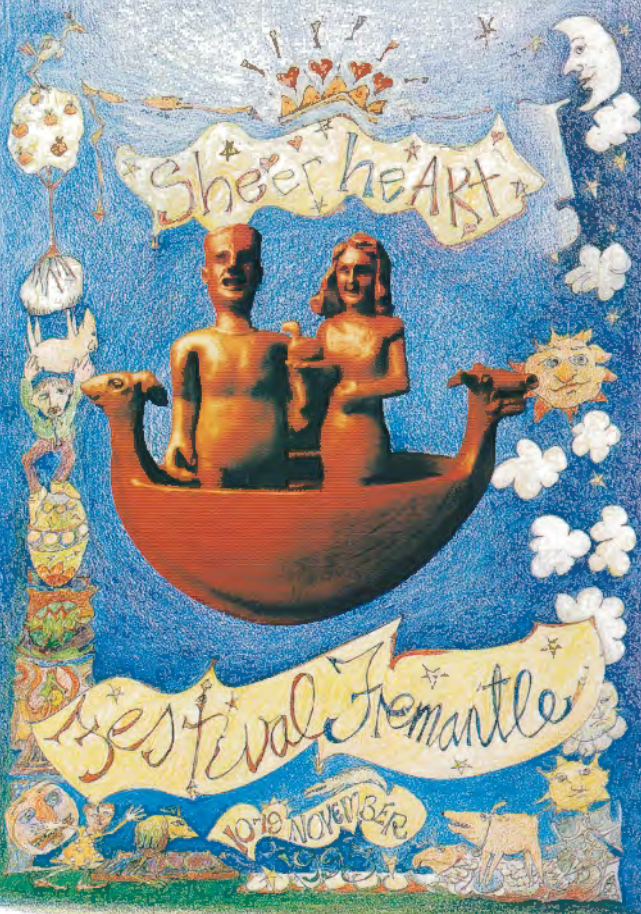


Sheer heart



Festival Fremantle

10-18 NOVEMBER 1999





TRILOK GURTU

TRILOK GURTU ALSO FEATURING GLOBAL NOMADS PERCUSSION

Former percussionist with the John McLaughlin Trio, Bombay born Trilok Gurtu performs solo surrounded by his expansive and distinctive drum kit. East meets West with tabla and dhol, snare and tom alongside African cowbells, bird calls and a bucket of water used to immerse bells and sundry resonating gongs. Trilok also sings usually in the form of Indian vocal mnemonics culminating in a unique sound that gently overlaps the vibrant blend of influences.

The Global Nomad Percussion quartet will be performing with Nova Ensemble's artist-in-residence Ron Reeves. Their repertoire focuses on world percussion in a landscape of exotic sound textures sprinkled with subtle delicacy and contrasting driving beats. Fly By Night Club 8.30 p.m. Tickets: \$15, \$12 concession Purchases: Mills Records, Town Hall Shop or Credit Card from the Fly By Night Club on 430 5976.

Produced by Festival Fremantle.

FREMANTLE GHOST WALK

Roll up for a haunting experience! An hour's walk around the centre of Fremantle will expose you to intriguing tales of fascinating phantoms. A curious chuckle will accompany the storyteller's details of lost souls and tortured spirits, but chills down the spine are guaranteed from this memorable occasion. Meet under Town Hall Clock 10,11,15,16,17 and 18 November 7.00 p.m. Tickets: \$10, \$7 concession, \$5 child. Purchases: At commencement of walk

Produced by Phantom Tours.

COMMUNITY CELEBRATION

NORTH FREMANTLE COMMUNITY MAP LAUNCH PARTY

A party to celebrate the completion of the North Fremantle Community Map which was started in 1992-1993 with a workshop to gather information and memories. The launch party exhibition will include displays of the process of both the workshop and the artwork phase plus paintings and historic displays. Town Hall Gallery. 6.00 p.m. Produced by the North Fremantle Community Association and North Ward Councillors.